

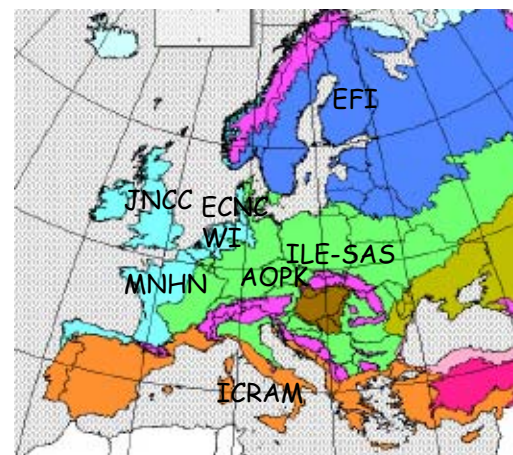
Natura 2000 Status and needs for data & monitoring requirements

Doug Evans

European Topic Centre Biological Diversity



European Topic Centre - Biological Diversity



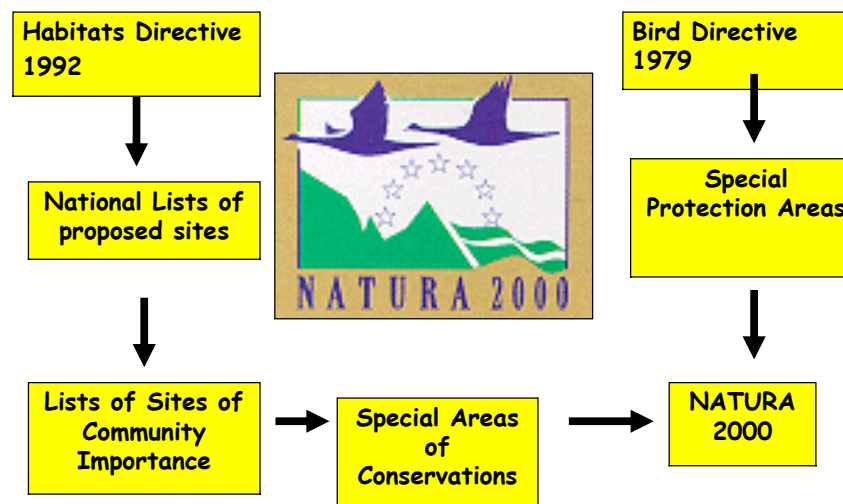
Consortium of 9 partners across Europe

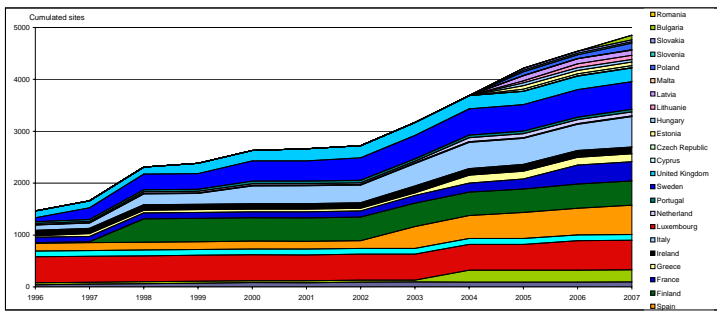


- Current state of the network
- Some early results from Article 17 reports
- Data requirements & need for monitoring

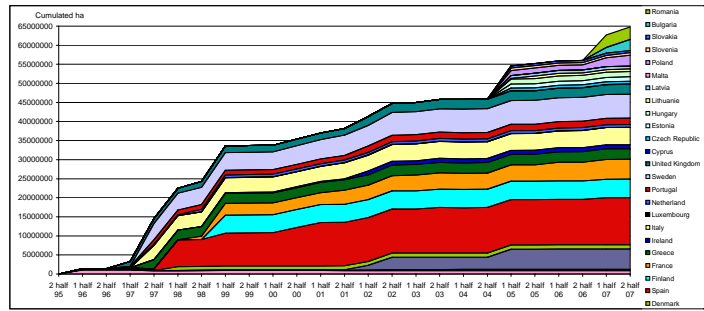


Building the network





SPA



(p)SCI



SPA

4 850 Sites

486 570 Km²

10% terrestrial area



SCI/SAC

21 574 Sites

648 441 Km²

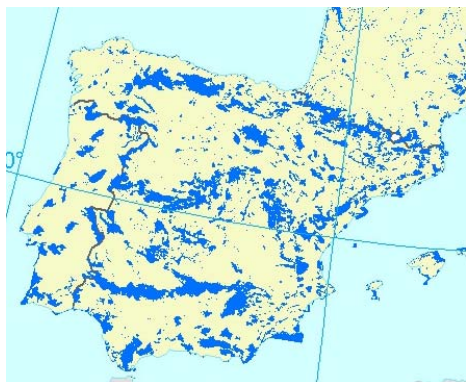
13% terrestrial area



- The terrestrial part of the network is nearing completion for the EU25
- Annual updates, sites in Bulgaria & Romania will be added in 2008
- Marine part of the network remains very incomplete (only \approx 10% of network is marine)



A network or a collection of sites ?



Need to use Article 10



Article 17 Reports

- A 6 yearly report including a conservation assessment of Annex I habitats and species of Annexes II, IV & V



Article 17 Reports

- A 6 yearly report including a conservation assessment of Annex I habitats and species of Annexes II, IV & V
- Report for each biogeographical region



Article 17 Reports

- A 6 yearly report including a conservation assessment of Annex I habitats and species of Annexes II, IV & V
- Report for each biogeographical region
- Assessment follows an agreed method based on definitions of 'Favourable Conservation Status' given in the Directive



Article 17 Reports

- A 6 yearly report including a conservation assessment of Annex I habitats and species of Annexes II, IV & V
- Report for each biogeographical region
- Assessment follows an agreed method based on definitions of 'Favourable Conservation Status' given in the Directive
- Assessment is not limited to sites in the Natura 2000 network



Parameters to be reported

Habitats	Species
Range*	Range*
Area*	Population*
Structure & functions	Habitat for species
Future prospects	Future prospects

* Current value and trend



HABITATS	Favourable	Unfavourable - inadequate	Unfavourable - bad	Unknown
Range	Stable & above 'reference value'	Other combinations	Large decrease	
Area	Stable & above 'reference value'	Other combinations	Large decrease	
Structure & function	Good	Other combinations	poor	
Future prospects	good	Other combinations	poor	
Overall Assessment	All green or 3 green & 1 unknown	One or more amber but no red	One or more red	Two or more 'unknown'

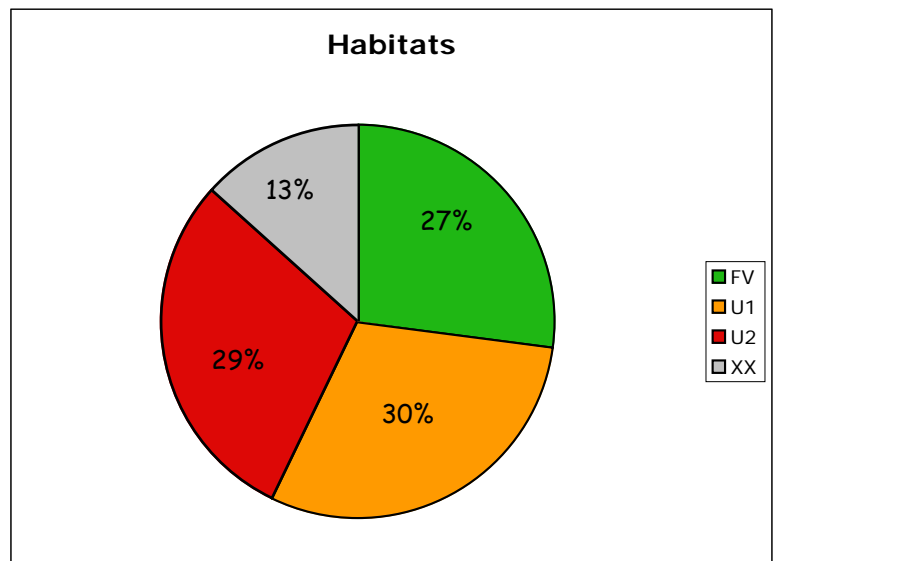


Some preliminary results from the Article 17 reports

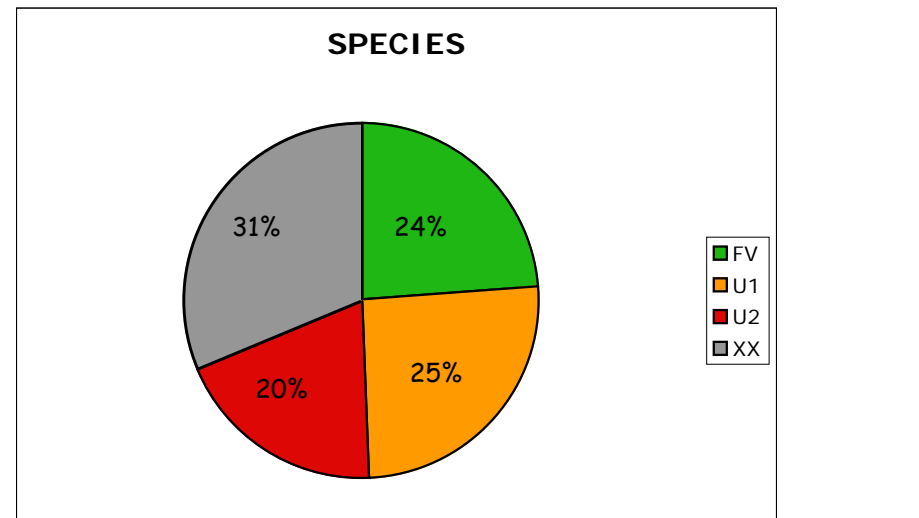
Based on uncorrected first deliveries
20 of 25 countries
(AT, DK, ES, LT & MT not included)



Conservation Status (2209 reports DRAFT)



Conservation Status (5027 reports - DRAFT)



In many cases data is missing or unknown

In many cases data is missing or unknown

**For 154 reports area of habitat not known (7%)
& for 237 species population is not known (5%)**



In many cases data is missing or unknown

For 154 reports area of habitat not known (7%)
& for 237 species population is not known (5%)

Clear that in many cases basic inventories of species & habitats are not available or are incomplete/out of date



In many cases data is missing or unknown

For 154 reports area of habitat not known (7%)
& for 237 species population is not known (5%)

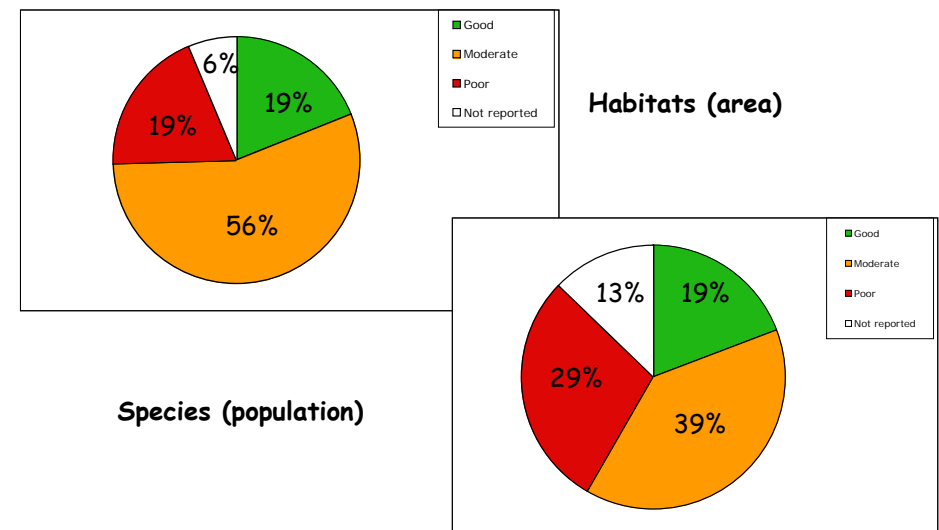
Clear that in many cases basic inventories of species & habitats are not available or are incomplete/out of date

If this is the situation with protected species & habitats what do we lack for the rest ?



- Expected too find problems with many invertebrates
- Apparent that other groups are also poorly known - e.g. bats, fish

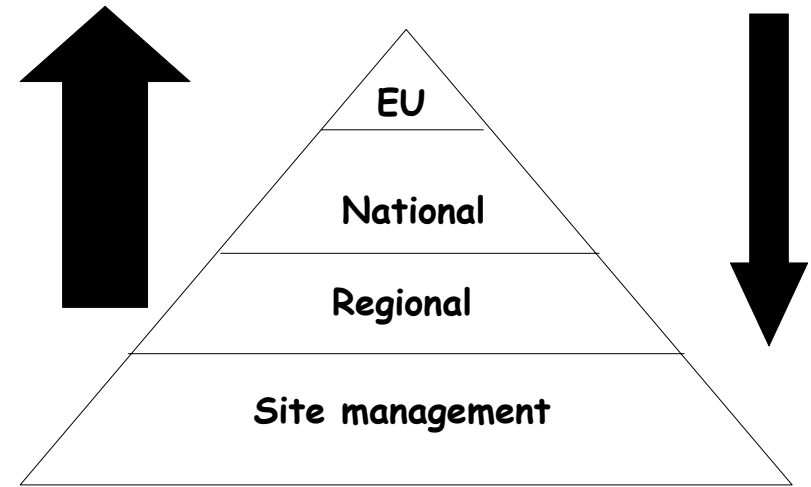
Data quality - DRAFT



Trends (DRAFT)

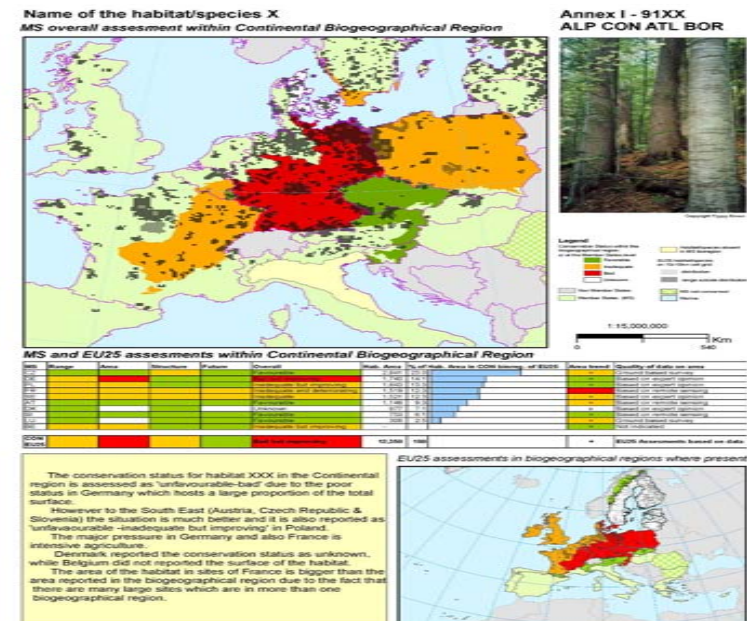
Habitats (area) 9% unknown

Species (population) 39% unknown



Article 17 report

- 3 products which go hand in hand:
- Composite Report (policy report)
 - National Summaries (as Annex)
 - Technical Report (web-based)
- (raw data will also be available)



- For very rare species/habitats it may be that entire population/area is monitored regularly
- In most cases some form of sampling will be required
- Need for statistically robust methods allowing estimation of trends



Experience with Article 17 reporting so far suggests that more co-ordination & standardisation is required in future if we wish to make good assessments for biogeographical regions, the EU or Europe.



Buxbaumia viridis



Localities	PL, SI, FR, IT, DE, LV, CZ, EE, SK
Grids	SE
Colonies	HU, FI
Sporophytes	UK
unknown	GR



Lutra lutra



Localities	IT, HU
Grids	BE, CZ, GR
Individuals	BE, LU, SK, PL, EE, FI, PT, SI, SK, LV, UK
Other	SE(reproducing females), FR, IE, DE (not given)



Further Information

The Natura 2000 Network

[http://biodiversity.eionet.europa.eu/
activities/Natura_2000/documentation](http://biodiversity.eionet.europa.eu/activities/Natura_2000/documentation)

[http://ec.europa.eu/environment/nature/
natura2000/index_en.htm](http://ec.europa.eu/environment/nature/natura2000/index_en.htm)

Article 17 reporting

[http://circa.europa.eu/Public/irc/env/monnat/
library?l=/guidlines_reporting&vm=detailed&sb=
Title](http://circa.europa.eu/Public/irc/env/monnat/library?l=/guidlines_reporting&vm=detailed&sb=Title)

